

---

**music 2<sup>nd</sup> Kanti study sheet for the test on the 9/30/2010**author:  
Linus Metzlerversion:  
**1.1.1**publish date:  
**9/27/2010**

---

# MAJOR SCALES

---

## TABLE OF CONTENTS

I can identify the natural notes .....	2
I know what an accidental does to a note.....	2
I know what a semitone and a tone are.....	2
I know the tone/semitone pattern of a major scale .....	2
I can build a scale from any given tonic .....	3
I can write the key signature for any major scale .....	3
I know the order of sharps and flats in the key signature.....	3
I can name the function of the notes of a scale .....	4
I can write a treble and bass clef.....	4
I can write sharps, flats and naturals.....	4
I know the mnemonic help for the order of scales .....	4
I know how the circle of fifths works .....	4

---

## INFO

This is a study sheet by Linus Metzler about Major Scales, which was mentioned in the 1<sup>st</sup> Kanti at Mr. Nick. There is no claim for completeness. All warranties are disclaimed.

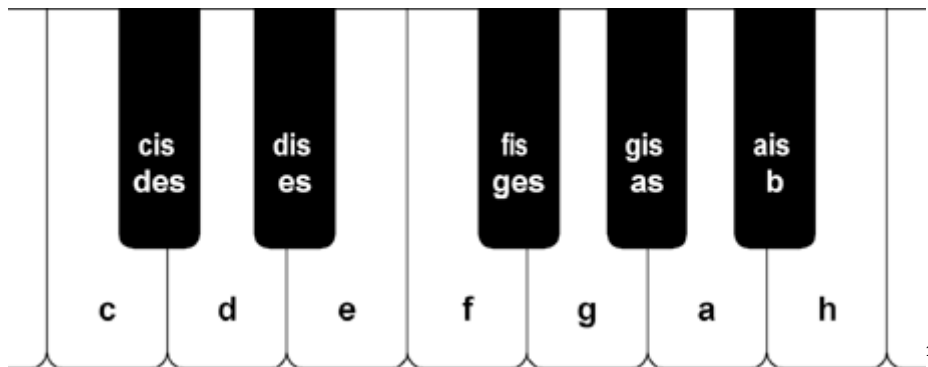


ksrstudysheet by [Linus Metzler](#) is under a [Creative Commons Attribution-Noncommercial 3.0 Unported license](#).

---

**STUDY PART**

---

**I CAN IDENTIFY THE NATURAL NOTES**

There is normally a tone between two white keys, except from B to C and E to F, where there is a semitone.

---

**I KNOW WHAT AN ACCIDENTAL DOES TO A NOTE**

Overwrites the key signature for the very one note.

---

**I KNOW WHAT A SEMITONE AND A TONE ARE**

*See "I CAN IDENTIFY THE NATURAL NOTES"*

---

**I KNOW THE TONE/SEMITONE PATTERN OF A MAJOR SCALE**

Whole:Whole:Half:Whole:Whole:Whole:Half

---

<sup>1</sup> German, sorry

## I CAN BUILD A SCALE FROM ANY GIVEN TONIC

Key Signature	Added #	Major Key	Key Signature	Added b	Major Key	Minor Key
1 sharp	F#	G major	1 flat	Bb	F major	D minor
2 sharps	C#	D major	2 flats	Eb	Bb major	G minor
3 sharps	G#	A major	3 flats	Ab	Eb major	C minor
4 sharps	D#	E major	4 flats	Db	Ab major	F minor
5 sharps	A#	B major	5 flats	Gb	Db major	Bb minor
6 sharps	E#	F# major	6 flats	Cb	Gb major	Eb minor

## I CAN WRITE THE KEY SIGNATURE FOR ANY MAJOR SCALE

*See above*

## I KNOW THE ORDER OF SHARPS AND FLATS IN THE KEY SIGNATURE

See above

### I CAN NAME THE FUNCTION OF THE NOTES OF A SCALE

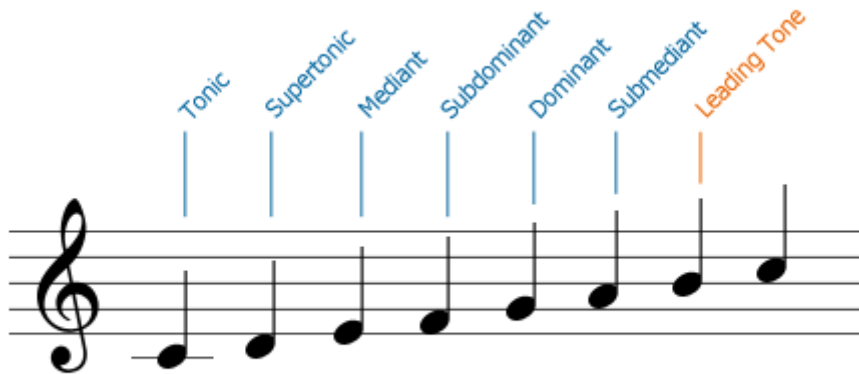


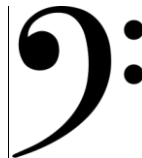
Fig. 25 Scale Degrees (Leading Tone)

### I CAN WRITE A TREBLE AND BASS CLEF

Treble



Bass



### I CAN WRITE SHARPS, FLATS AND NATURALS

Sharp, Flat Natural



### I KNOW THE MNEMONIC HELP FOR THE ORDER OF SCALES

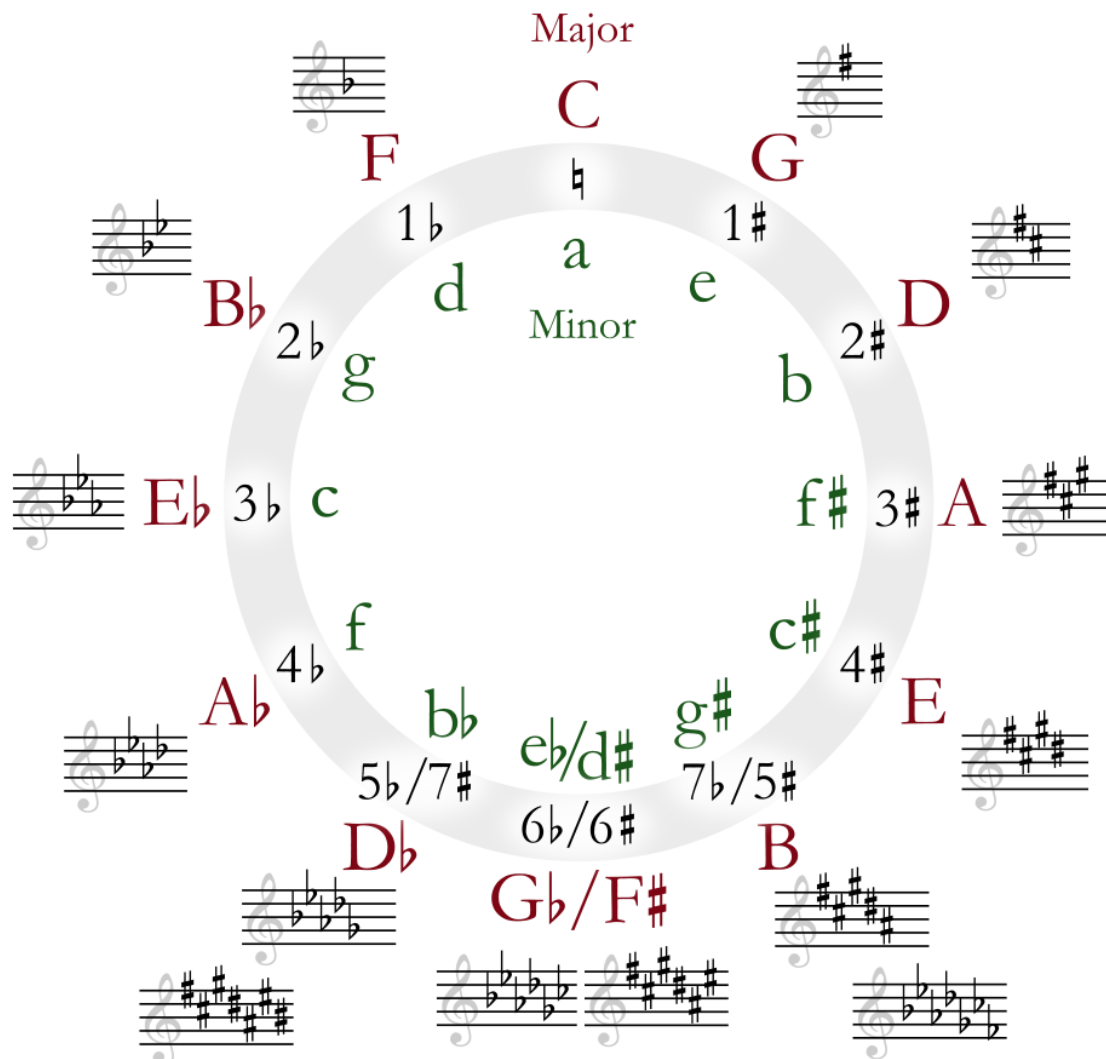
#### FOR SHARPS

Geh du alter Esel hole Fische.

#### FOR FLATS

Frisches Brot Essen Asses des Gesanges.

## I KNOW HOW THE CIRCLE OF FIFTHS WORKS



You just need the outer circle. It works like the mnemonic help. It also shows the relation between the scales. Scales next to each other have one part together, e.g. the upper part of C (from G-B) is the lower part of G.<sup>2</sup>

## SOURCES

[Wikipedia](#)

<sup>2</sup> Bi ni