

music 2nd Kanti study sheet for the test on the 12/10/2010

author: Linus Metzler, Lukas Bersinger

version: **1.0b**

publish date: **12/7/2010**

MAJOR AND MINOR SCALES

TABLE OF CONTENTS

I can read notes in treble clef.....	2
I can build a major scale on any tonic	2
I can work out the key signature of any major scale.....	2
I know the function of the notes in a scale	2
I can find out the relative minor scale to any major scale	3
I know the tone-semitone pattern of a natural minor scale	3
I can build a minor scale of any tonic.....	3
I can transform a natural minor scale into a harmonic minor scale.....	3
I can transform a natural minor scale into a melodic minor scale	3
I know that on the way down the melodic minor scale sounds like a natural minor scale.....	3
I can write the key signature of major and their relative minor scales.....	3
I can find out the key signature of tonic major and minor scales (same tonic)	3
I can handle the basic functions of Note Pad: opening a new document, writing notes, accidentals, repeats, labeling	3

INFO

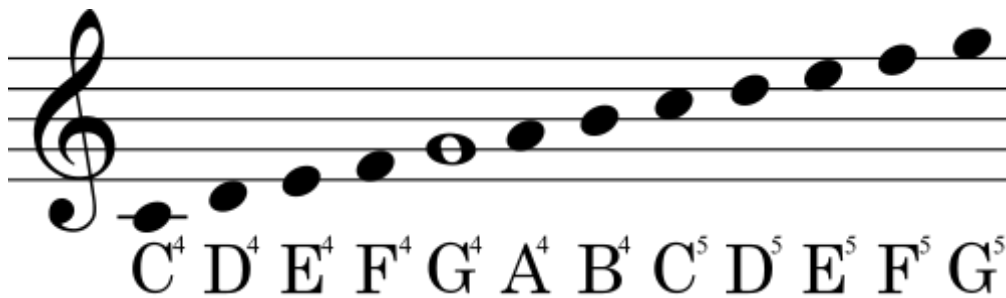
This is a study sheet by Linus Metzler about Major and Minor Scales, which was mentioned in the 2nd Kanti at Mr. Nick. There is no claim for completeness. All warranties are disclaimed.



ksrstudysheet by [Linus Metzler](#) is under a [Creative Commons Attribution-NonCommercial 3.0 Unported license](#).

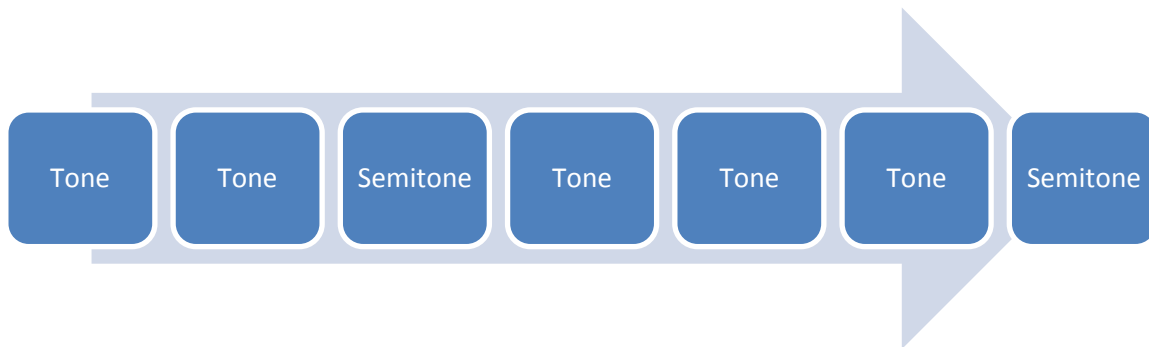
STUDY PART

I CAN READ NOTES IN TREBLE CLEF

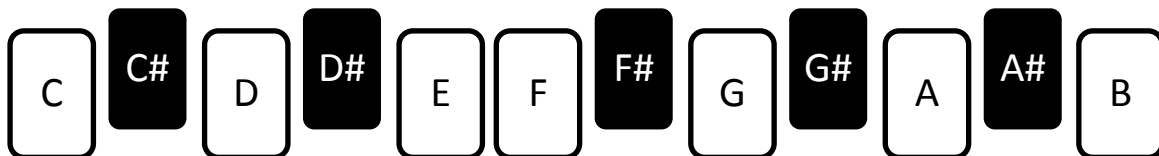


I CAN BUILD A MAJOR SCALE ON ANY TONIC

To build a major scale you can use the tone semitone pattern of a major scale:



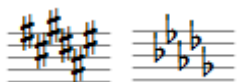
Attention: Between B and C, E and F there's only a semitone:



I CAN WORK OUT THE KEY SIGNATURE OF ANY MAJOR SCALE

There is the mnemonic help:

Fünf **B**londe **E**skimos **A**ssen **D**ESsert **G**EStern. – for flats and **G**eh **D**u **A**lter **E**sel **H**ole **F**ISche. – for the sharps.



I KNOW THE FUNCTION OF THE NOTES IN A SCALE

tonic – supertonic – mediant – subdominant – dominant – submediant – leading note – subtonic – tonic

I CAN FIND OUT THE RELATIVE MINOR SCALE TO ANY MAJOR SCALE

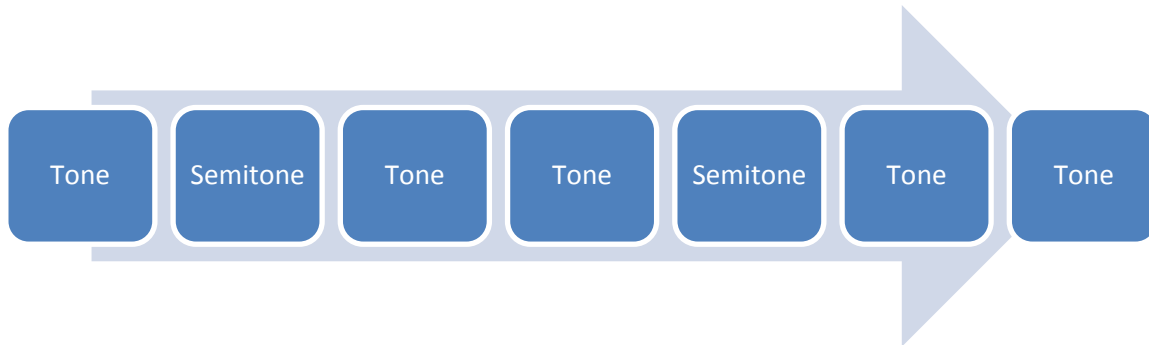
It's the sixth tone.

I KNOW THE TONE-SEMITONE PATTERN OF A NATURAL MINOR SCALE

w – h – w – w – h – w – w (w = whole tone, h = half tone)

I CAN BUILD A MINOR SCALE OF ANY TONIC

Use the tone – semitone pattern of a minor scale:



I CAN TRANSFORM A NATURAL MINOR SCALE INTO A HARMONIC MINOR SCALE

Seventh tone is raised by a half tone

I CAN TRANSFORM A NATURAL MINOR SCALE INTO A MELODIC MINOR SCALE

Sixth and seventh tone are raised by a half tone

I KNOW THAT ON THE WAY DOWN THE MELODIC MINOR SCALE SOUNDS LIKE A NATURAL MINOR SCALE

Now you know it!

I CAN WRITE THE KEY SIGNATURE OF MAJOR AND THEIR RELATIVE MINOR SCALES

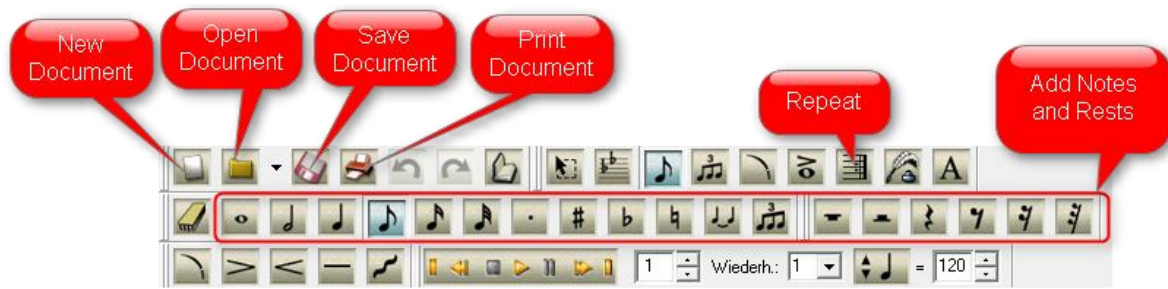
The relative minor scale is always the sixth step of the major scale.



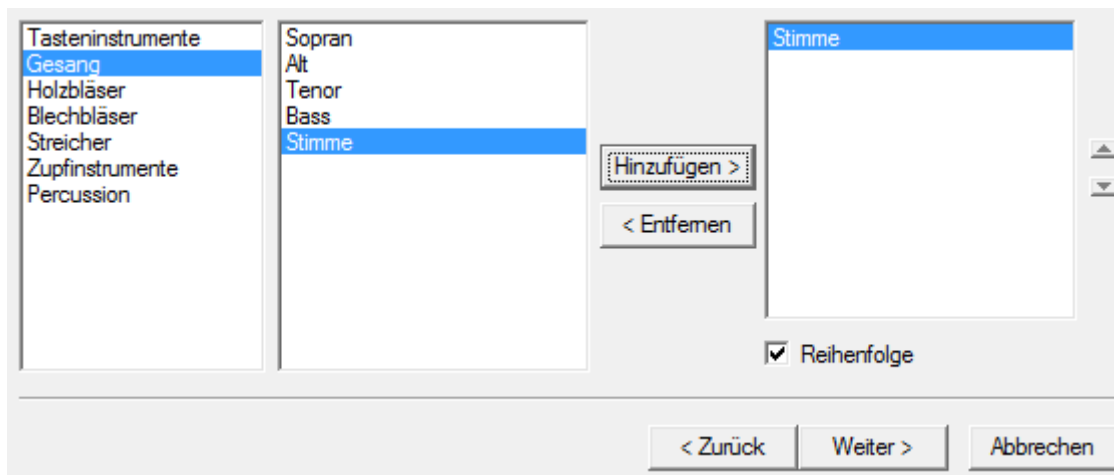
I CAN FIND OUT THE KEY SIGNATURE OF TONIC MAJOR AND MINOR SCALES (SAME TONIC)

See above.

I CAN HANDLE THE BASIC FUNCTIONS OF NOTE PAD: OPENING A NEW DOCUMENT, WRITING NOTES, ACCIDENTALS, REPEATS, LABELING



You have to use Gesang > Stimme to create a new document.



SOURCES

- GCSE Music
- [Wikipedia](#)
- Finale Notepad 2008
- MuseScore 0.9.6.3